

## Remote Monitoring and Management System



The HarborMaster gives you the peace-of-mind that your boat is safe and secure, 24 hours-a-day, 7 days-a-week.

The wireless world meets boating with the state-of-the-art HarborMaster Mark II, a remote management and monitoring system for boats. The HarborMaster revolutionises the way boaters can keep track of their valuable asset.

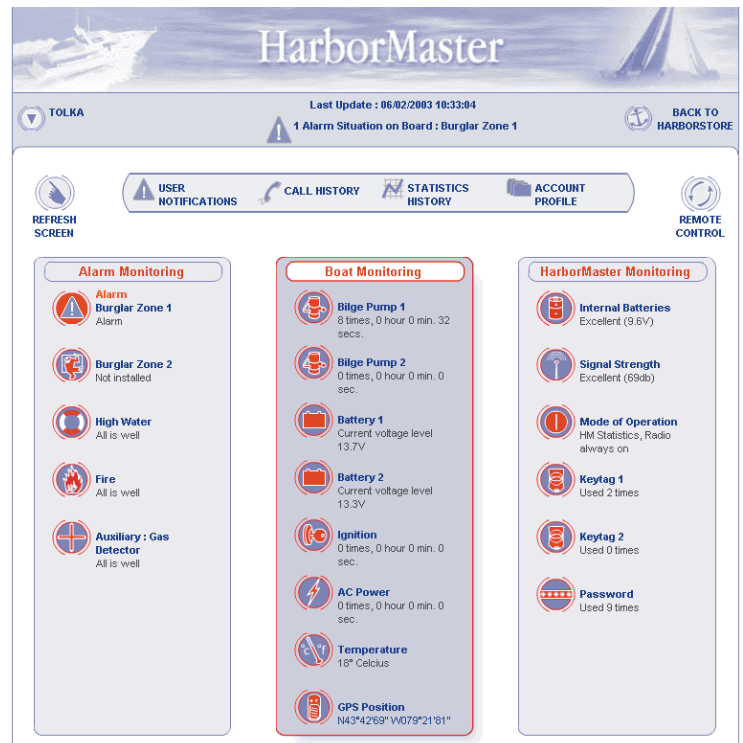
Whether your vessel is unattended at a mooring or marina dock, or you are on-board, the HarborMaster monitors all the vital systems of your boat, including batteries, bilge pump activity, intrusion, fire, high water and more.

The HarborMaster contains its own GSM radio to send and receive information in real-time, giving you immediate access to the status of your boat. With complete Internet integration for world-wide system access, you are always connected to your boat's activity from your secure personal account on our website at [www.harborstoreurope.com](http://www.harborstoreurope.com).

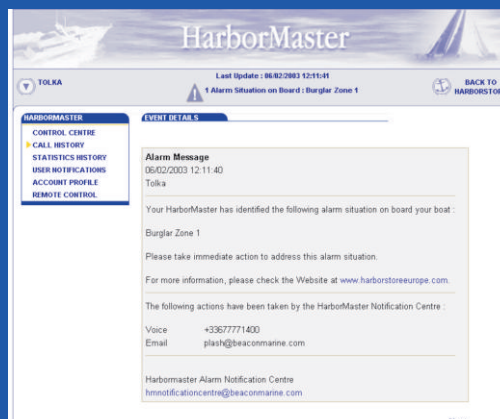
### The HarborMaster monitors your boat's vital signs:

- ✓ Battery levels
- ✓ High water level
- ✓ Bilge pump activity
- ✓ Gray water levels
- ✓ Intrusion zones (magnetic and infrared sensors)
- ✓ Shore power
- ✓ Ignition
- ✓ Smoke, fire, gas
- ✓ Temperature
- ✓ GPS coordinates

With its two internal relays, you can also remotely turn on/off on-board devices such as deck lights, heating, air-conditioning, bilge pump,...



Web Control Centre



Complete history of all messages

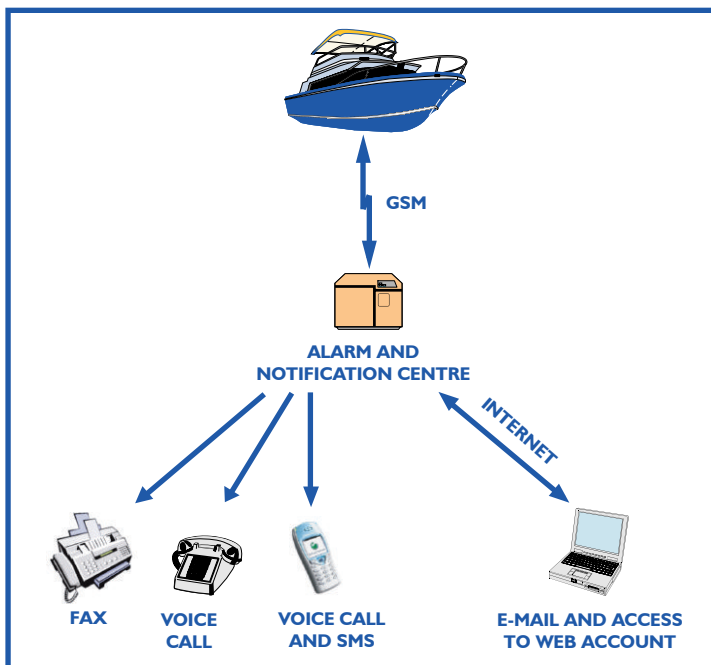


Graphical display for all sensors

The HarborMaster transmits data on a regular basis (daily, weekly or monthly), whenever an event happens on-board, or on demand, giving you a complete overview of the status of all the sensors on your boat. All messages sent and received by your HarborMaster are stored in a secure database and are accessible at any time via the Web.

Your HarborMaster notifies you in real-time of any unusual or potentially dangerous situation. As soon as an alarm situation is detected, you are notified immediately by voice call (fixed line telephone or mobile), text message, email and/or fax. You can notify as many people as you like and in whatever combination you choose (low battery and unusual bilge activity by fax to marina; intrusion, fire and high water to your mobile.)

With its remote control commands, you can totally manage the system (arm/disarm, change alarm thresholds, turn on/off devices) from anywhere via your secure web account or by mobile phone.



**Complete package**



**Full range of accessories**



**User friendly Web access**



**Immediate event notification**

The HarborMaster is brought to you by Beacon Marine Europe, innovators of wireless-to-web solutions for personal asset protection.  
 Web: [www.harborstoreurope.com](http://www.harborstoreurope.com) Email: [europesales@beaconmarine.com](mailto:europesales@beaconmarine.com) Tel: +44 20 7871 0335

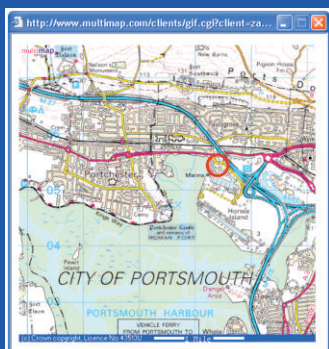
**Pan European network coverage :**

Developed using GSM technology, the wireless communications standard with the greatest global coverage, the HarborMaster's network subscription is valid throughout Europe (as well as Asia, Africa, Australia and parts of the Americas).

No matter where you are, as long as there is GSM coverage, the HarborMaster automatically adjusts to choose the network provider with the highest quality in your area to guarantee the most reliable communication.

**Complete package ready for installation:**

- ✓ HarborMaster Mark II unit (SonyEricsson GSM radio included)
- ✓ GSM network subscription valid throughout Europe (SIM card installed)
- ✓ Two remote keytags for activation and deactivation of system
- ✓ Six 12 volt relays (for the sensors)
- ✓ Two magnetic sensors for intrusion
- ✓ AC shore power sensor
- ✓ High water float switch
- ✓ External warning beeper
- ✓ External LED assembly to indicate system activation
- ✓ Internal GSM antenna
- ✓ Adapter cable for external GSM antenna
- ✓ NMEA 0183 interface
- ✓ Installation guide and user manuals



**Mapping of GPS coordinates**



**Remote control commands**